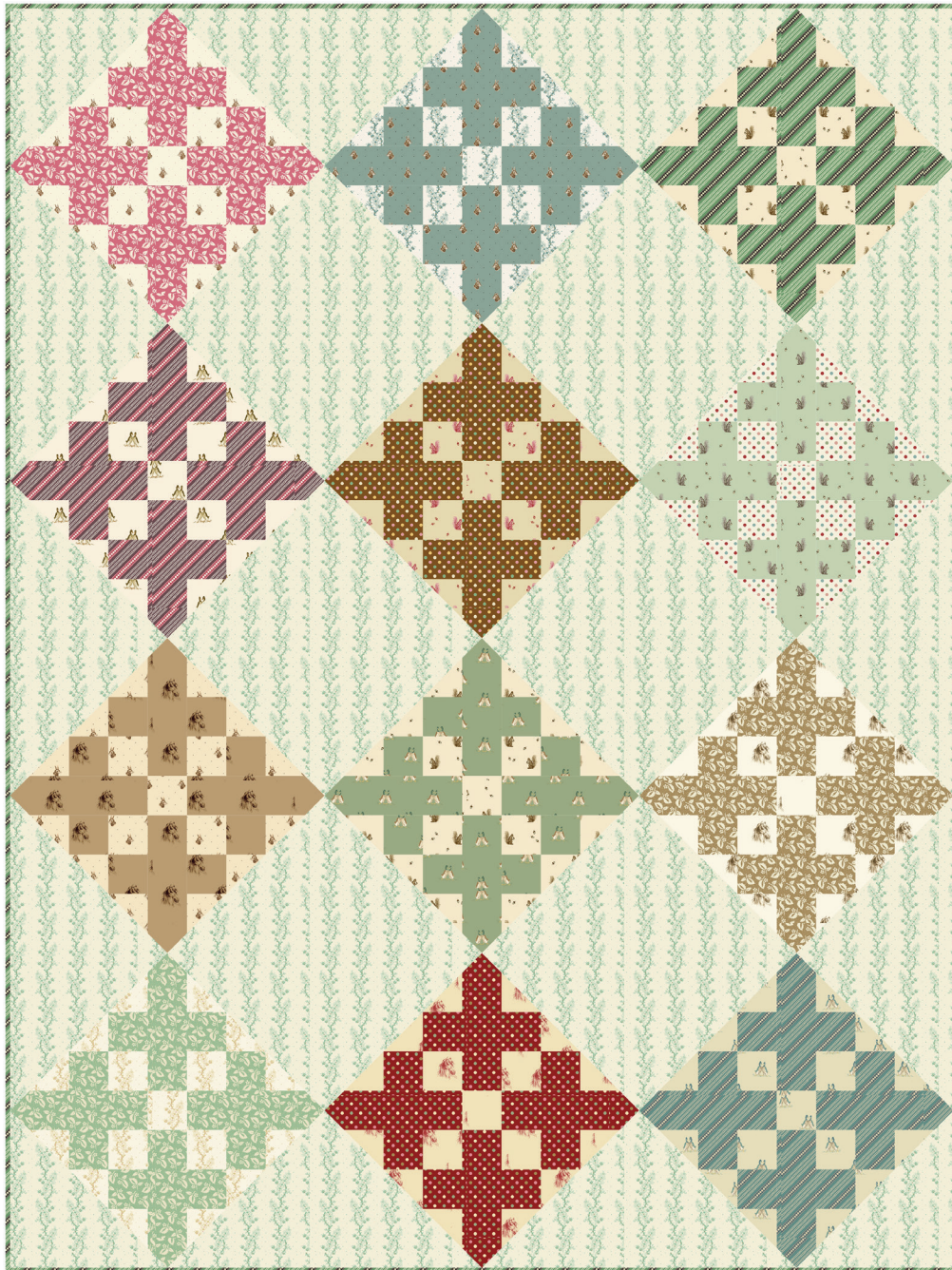


Mayfair

MAX & LOUISE



Noel Quilt designed by: **Max & Louise** • Quilt Size: **51 1/2" x 68 1/2"**

Skill Level: **Intermediate** • andoverfabrics.com

andover • makower.uk

Free Pattern Download Available

1384 Broadway New York, NY 10018
Tel. (800) 223-5678 • andoverfabrics.com

Noel



Featuring Andover Fabrics new Collection: Mayfair by Max & Louise

Quilt designed by Max & Louise

Quilt finished 51 1/2" x 68 1/2"

Cutting Directions

Note: Read assembly directions before cutting patches. Borders are cut to exact length required plus 1/4" seam allowance. WOF designates the width of fabric from selvedge to selvedge (approximately 42" wide).

Fabric A Cut (4) Template 1 pieces and (8) Template 3 squares (Diagram 1). *Note: Pay attention to the fabric direction.*

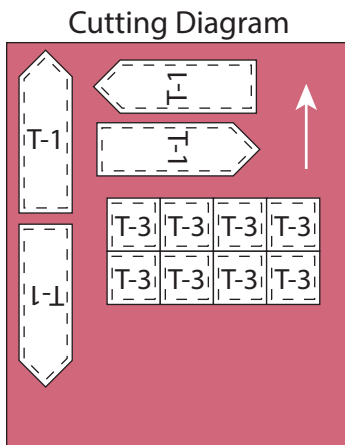


Diagram 1

Fabric B Cut (4) Template 1 pieces and (8) Template 3 squares (Diagram 1).

Fabric C Cut (4) Template 1 pieces and (8) Template 3 squares (Diagram 1).

Fabric D Cut (4) Template 1 pieces and (8) Template 3 squares (Diagram 1).

Fabric E Cut (4) Template 1 pieces and (8) Template 3 squares (Diagram 1).

Fabric F Cut (4) Template 1 pieces and (8) Template 3 squares (Diagram 1).

Fabric Requirements

		Yardage	Fabric
Fabric A	blocks	Fat 1/4	1209-E
Fabric B	blocks	Fat 1/4	1206-T
Fabric C	blocks	Fat 1/4	1212-G
Fabric D	blocks	Fat 1/4	1212-R
Fabric E	blocks	Fat 1/4	1211-N
Fabric F	blocks	Fat 1/4	1207-G
Fabric G	blocks	Fat 1/4	1205-N
Fabric H	blocks	Fat 1/4	1208-G
Fabric I	blocks	Fat 1/4	1209-N
Fabric J	blocks	Fat 1/4	1209-G
Fabric K	blocks	Fat 1/4	1211-R
Fabric L	blocks	Fat 1/4	1212-T
Fabric M	blocks	Fat 1/4	1206-LR
Fabric N	blocks	Fat 1/4	1210-TL
Fabric O	blocks	Fat 1/4	1207-N
Fabric P	blocks	Fat 1/4	1208-NL
Fabric Q	blocks	Fat 1/4	1207-RL
Fabric R	blocks	Fat 1/4	1211-L
Fabric S	blocks	Fat 1/4	1206-N
Fabric T	blocks	Fat 1/4	1205-NL
Fabric U	blocks	Fat 1/4	1210-YL
Fabric V	blocks	Fat 1/4	1205-RL
Fabric W	blocks	Fat 1/4	1208-TL
Fabric X	background	2 3/4 yards	1210-GL
Binding		5/8 yard	1212-G
Backing		3 1/2 yards	Your Choice

Fabric G Cut (4) Template 1 pieces and (8) Template 3 squares (Diagram 1).

Fabric H Cut (4) Template 1 pieces and (8) Template 3 squares (Diagram 1).

Fabric I Cut (4) Template 1 pieces and (8) Template 3 squares (Diagram 1).

Fabric J Cut (4) Template 1 pieces and (8) Template 3 squares (Diagram 1).

Fabric K Cut (4) Template 1 pieces and (8) Template 3 squares (Diagram 1).

Fabric L Cut (4) Template 1 pieces and (8) Template 3 squares (Diagram 1).

Noel

Fabric M Cut (12) Template 2 triangles and
(5) Template 3 squares (Diagram 2A).

Fabric N Cut (12) Template 2 triangles and
(5) Template 3 squares (Diagram 2A).

Fabric O Cut (24) Template 2 triangles and
(10) Template 3 squares (Diagram 2B).

Fabric P Cut (12) Template 2 triangles and
(5) Template 3 squares (Diagram 2A).

Fabric Q Cut (12) Template 2 triangles and
(5) Template 3 squares (Diagram 2A).

Fabric R Cut (12) Template 2 triangles and
(5) Template 3 squares (Diagram 2A).

Fabric S Cut (12) Template 2 triangles and
(5) Template 3 squares (Diagram 2A).

Fabric T Cut (12) Template 2 triangles and
(5) Template 3 squares (Diagram 2A).

Fabric U Cut (12) Template 2 triangles and
(5) Template 3 squares (Diagram 2A).

Fabric V Cut (12) Template 2 triangles and
(5) Template 3 squares (Diagram 2A).

Fabric W Cut (12) Template 2 triangles and
(5) Template 3 squares (Diagram 2A).

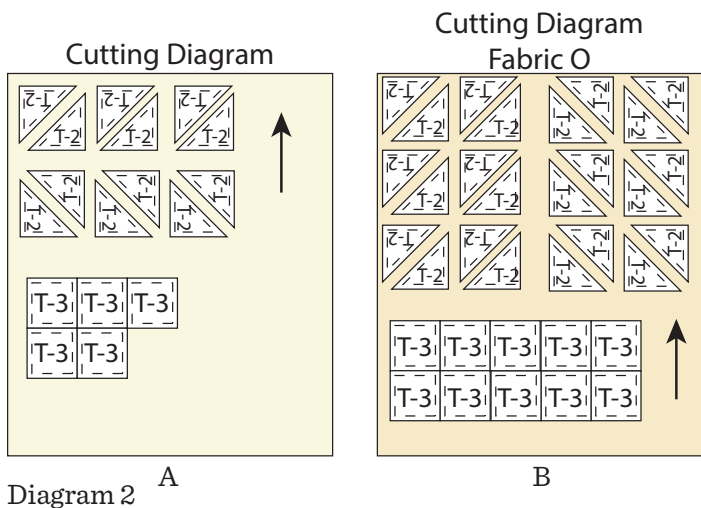
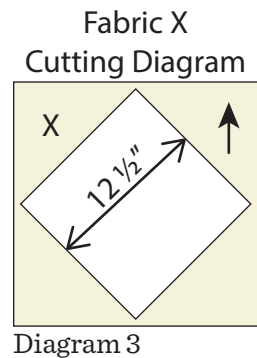


Diagram 2 A

Diagram 2 B

Fabric X Cut (2) 19 1/4" x WOF strips. Sub-cut
(3) 19 1/4" squares and (2) 9 3/8" squares.
Cut the 19 1/4" squares across both
diagonals to make (12) 19 1/4" triangles.
*Note: Only (10) 19 1/4" triangles will be
used.* Cut (1) 9 3/8" square across the
diagonal slanting from left to right to
make (2) 9 3/8" corner triangles. Cut
(1) 9 3/8" square across the diagonal
slanting from right to left to make (2) 9 3/8"
corner triangles.

Cut (3) 18" x WOF strips. Sub-cut (6) 18"
squares. From the 18" squares cut
(6) 12 1/2" setting squares on point
within the 18" squares (Diagram 3).



Binding Cut (7) 2 1/2" x WOF strips for the binding.

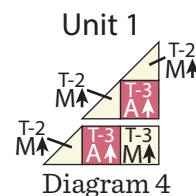
Backing Cut (2) 60" x WOF strips. Sew the strips
together and trim to make (1) 60" x 77"
backing.

Making the Quilt

*The arrows in figures represent the fabric print direction.
Pay attention to the fabrics and unit orientations when
assembling the various components.*

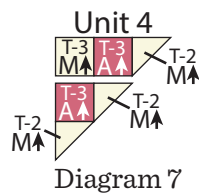
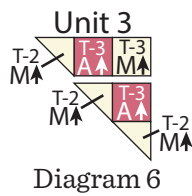
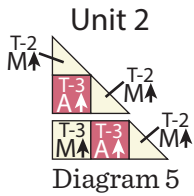
1. Block Assembly

Refer to Diagram 4 and sew together (3) Fabric M
Template 2 triangles, (2) Fabric A Template 3 squares
and (1) Fabric M Template 3 square to make (1) Unit 1
triangle.

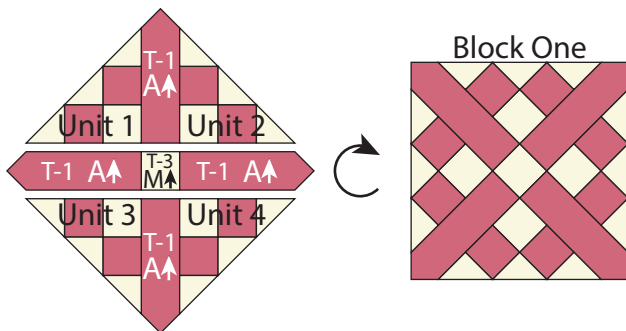


Noel

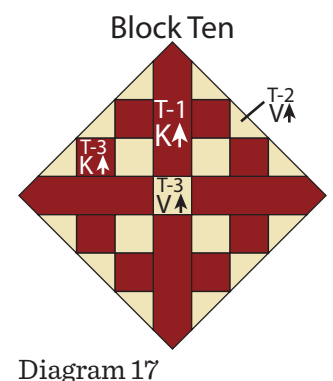
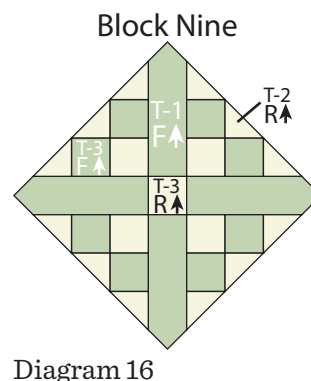
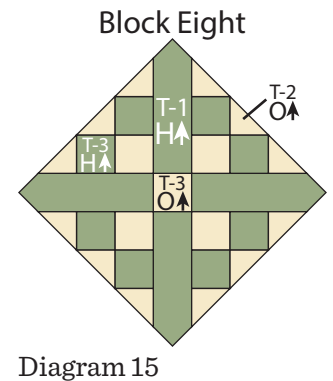
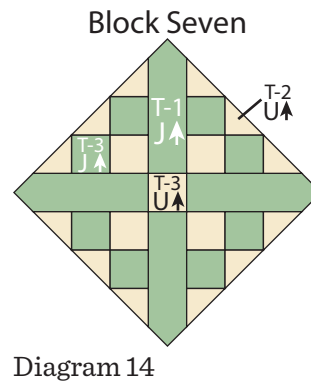
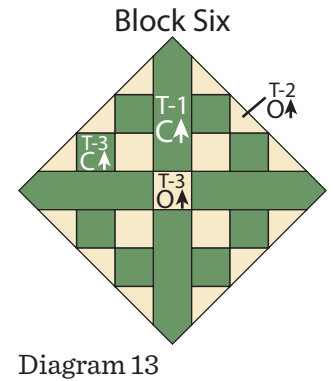
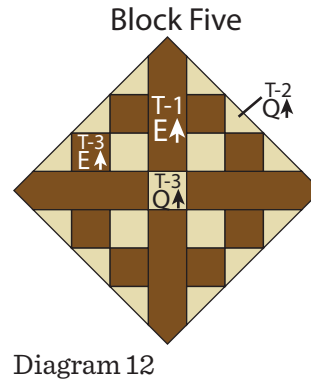
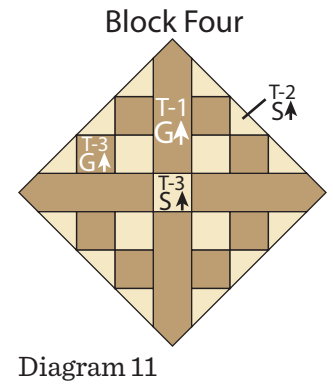
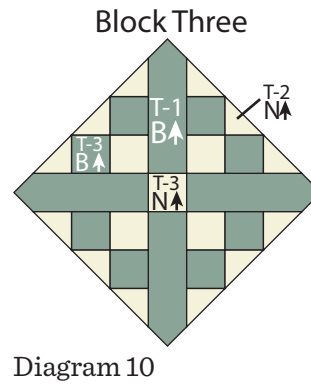
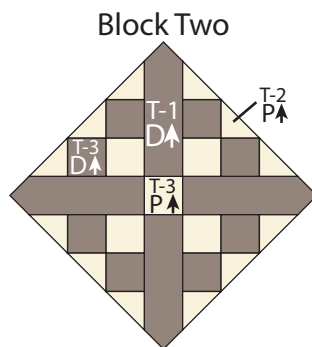
- Repeat Step 1 and refer to Diagrams 5-7 for fabric identification, placement and orientation to make (1) Unit 2 triangle, (1) Unit 3 triangle and (1) Unit 4 triangle.



- Sew together (1) Unit 1 triangle, (1) Fabric A Template 1 piece and (1) Unit 2 triangle, in that order from left to right, to make the top row (Diagram 8).
- Sew (1) Fabric A Template 1 piece to each side of (1) Fabric M Template 3 square to make the middle row (Diagram 8).
- Sew together (1) Unit 3 triangle, (1) Fabric A Template 1 piece and (1) Unit 4 triangle, in that order from left to right, to make the bottom row (Diagram 8).
- Sew together the (3) pieced rows from Steps 3-5 to make (1) Block One square (Diagram 8). *Note: The block should measure 12 1/2" square.*



- Repeat Steps 1-6 and refer to Diagrams 9-19 for fabric identification, placement and orientation to make (1) of each block square for Block Two through Block Twelve.



Noel

Block Eleven

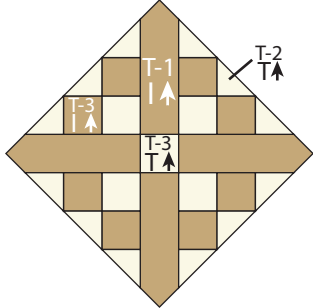


Diagram 18

Block Twelve

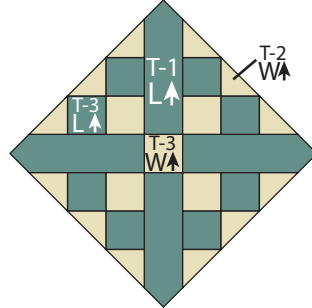


Diagram 19

Quilt Top Assembly

(Refer to the Quilt Layout when assembling the quilt top.)

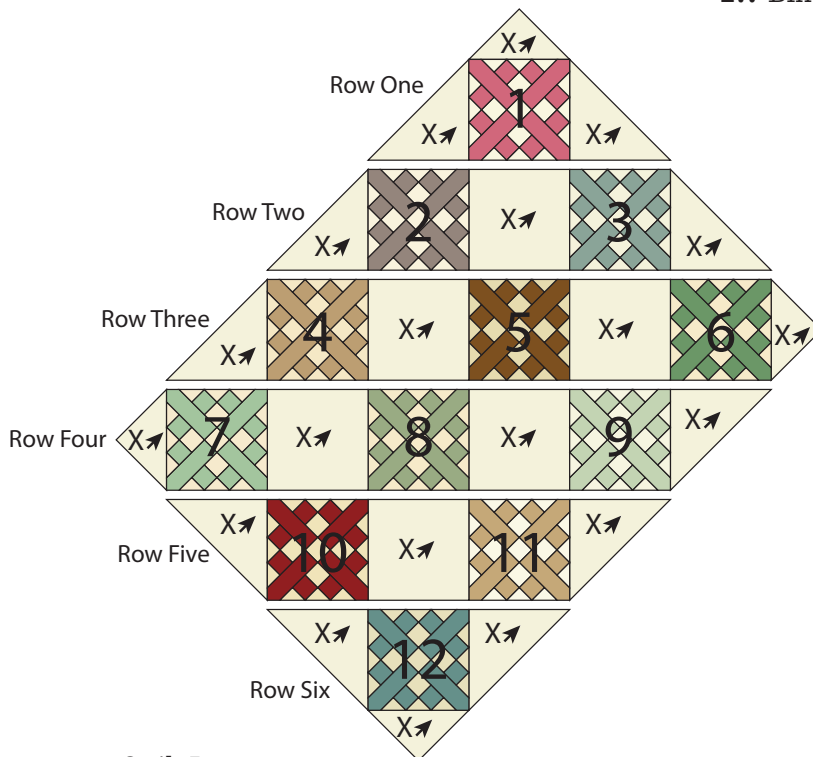
8. Sew $9 \frac{3}{8}$ " Fabric X corner triangle to the top of (1) Block One square. Sew (1) $19 \frac{1}{4}$ " Fabric X triangle to each side of the Block One square to make Row One.
9. Sew together (1) $19 \frac{1}{4}$ " Fabric X triangle, (1) Block Two square, (1) $12 \frac{1}{2}$ " Block X square, (1) Block Three square and (1) $19 \frac{1}{4}$ " Fabric X triangle, in that order from left to right, to make Row Two.
10. Sew together (1) $19 \frac{1}{4}$ " Fabric X triangle, (1) Block Four square, (1) $12 \frac{1}{2}$ " Fabric X square, (1) Block Five square, (1) $12 \frac{1}{2}$ " Fabric X square, (1) Block Six square

and (1) $9 \frac{3}{8}$ " Fabric X corner triangle, in that order from left to right, to make Row Three.

11. Repeat Step 10 and refer to the quilt layout for component identification, placement and orientation to make Row Four.
12. Repeat Step 9 and refer to the quilt layout for component identification, placement and orientation to make Row Five.
13. Repeat Step 8 and refer to the quilt layout for component identification, placement and orientation to make Row Six.
14. Sew together the (6) pieced Rows, lengthwise and in numerical order from the top to bottom, to make the quilt top.

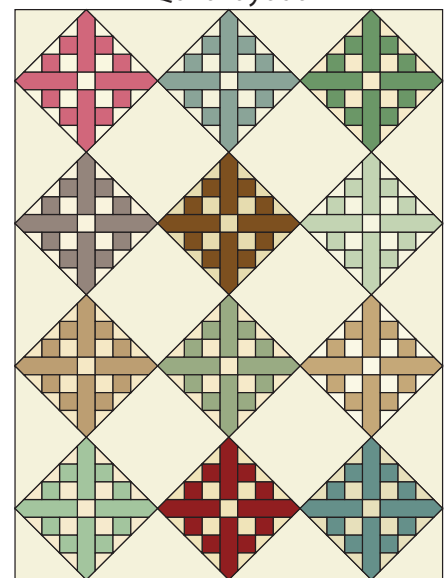
Finishing the Quilt

15. Layer and quilt as desired.
16. Sew the (7) binding strips together, end to end with a 45-degree seams, to make the binding. Fold this long strip in half lengthwise with wrong sides together and press.
17. Bind as desired.

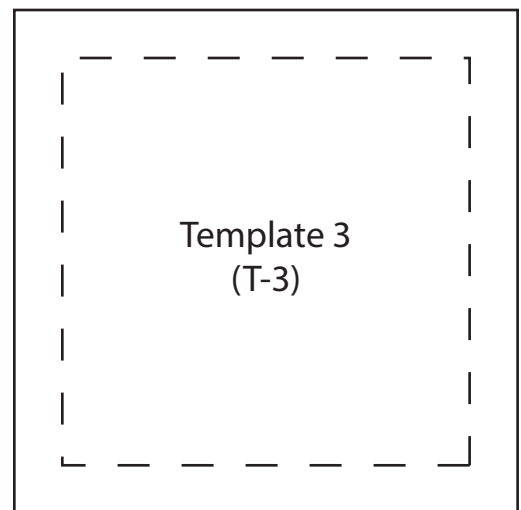
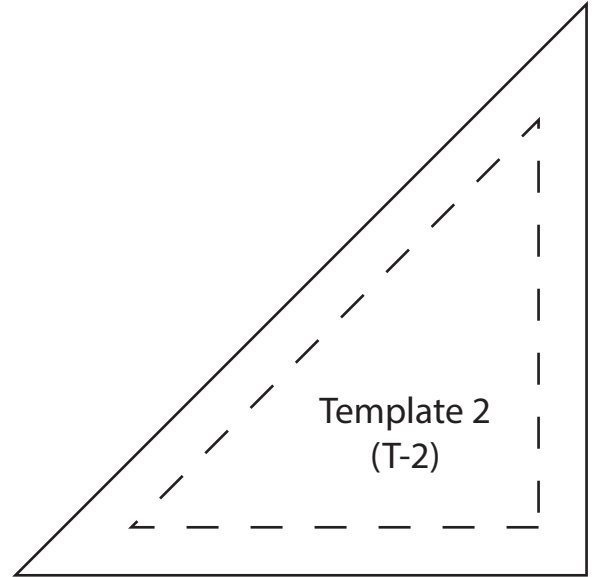
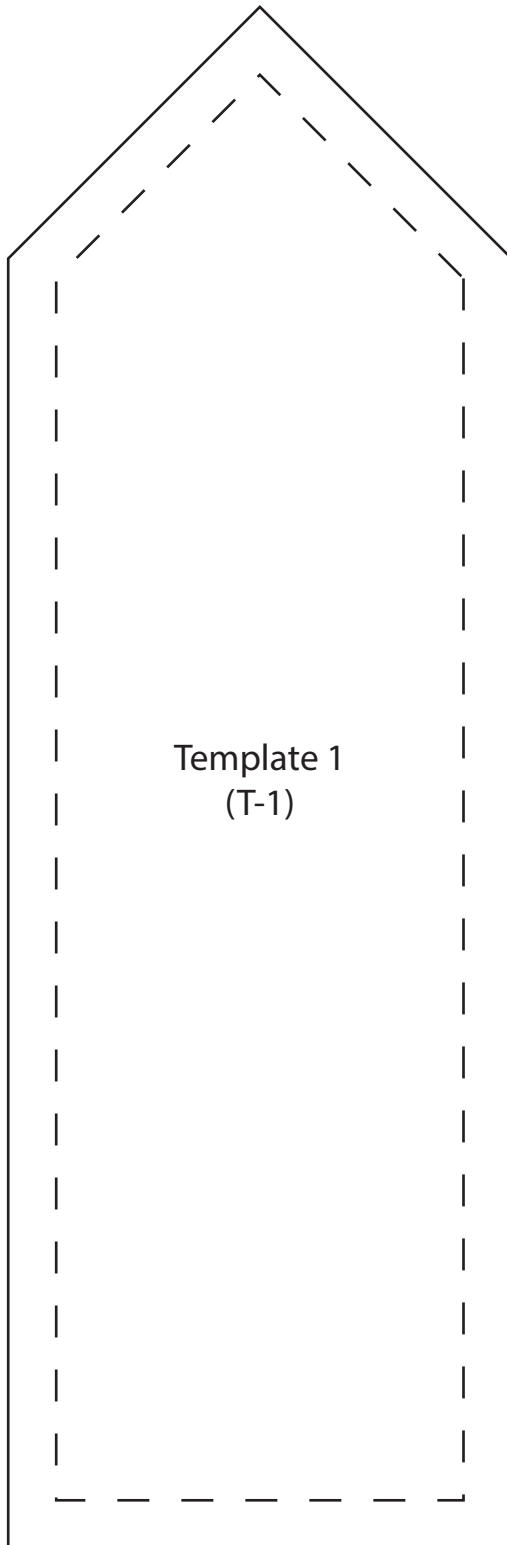
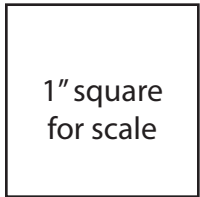


Quilt Layout

Quilt Layout



100% Templates



Mayfair

MAX & LOUISE



1205-N

Fat ¼



1205-NL

Fat ¼



1205-RL

Fat ¼



1206-LR

Fat ¼



1206-N

Fat ¼



1206-T

Fat ¼



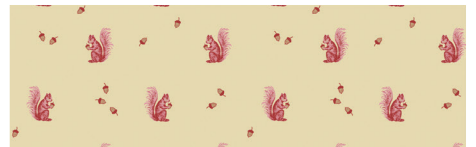
1207-G

Fat ¼



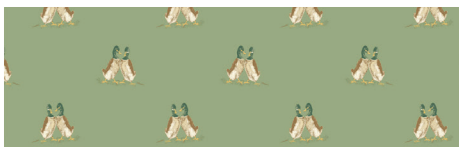
1207-N

Fat ¼



1207-RL

Fat ¼



1208-G

Fat ¼



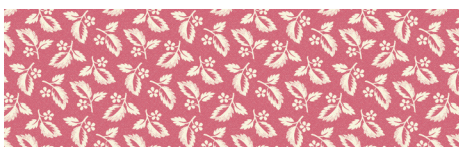
1208-NL

Fat ¼



1208-TL

Fat ¼



1209-E

Fat ¼



1209-G

Fat ¼



1209-N

Fat ¼



1210-GL

2 ¾ yds



1210-TL

Fat ¼



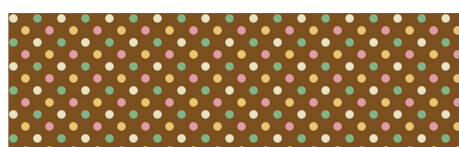
1210-YL

Fat ¼



1211-L

Fat ¼



1211-N

Fat ¼



1211-R

Fat ¼



1212-G

(includes binding)

7/8 yd



1212-R

Fat ¼



1212-T

Fat ¼

Bolts needed to cut project kits: 15 yds = 1 bolt

Fabrics shown are 25% of actual size.

Backing

(Your Choice)

3 ½ yds

andover • makower.uk

Free Pattern Download Available

1384 Broadway New York, NY 10018

Tel. (800) 223-5678 • andoverfabrics.com